



MULTIPLEX
Modellsport GmbH & Co. KG

Robonova Grip L/R

#138080

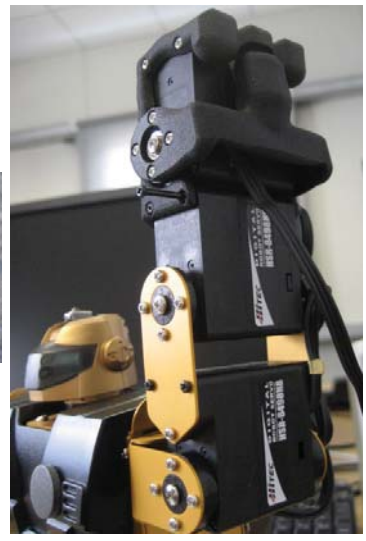
1. Assembly

- Vorbereitung

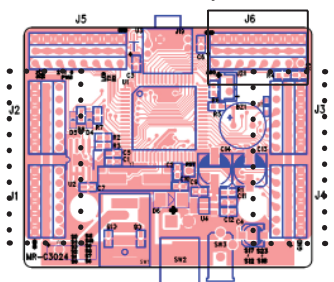
*This Grip Set requires Hitec Robot Servo HSR-8498HB or HSR-5498SG or HSR-5980SG or HSR-5990TG.



*Unscrew Servo screws at first, and screw again on the grip set.



- Connection



Please use free servo ports



and refer board markup for connected servo port number.

2. Using Robobasic to control Grip Servos

- Please use Servo Motor Real-time control button to control newly attached servos. For more detail, please refer Robonova English Manual page 68 Servo motor realtime control section.

```

MOVE G6A, 85, 75, 152, 88, 114, 60
MOVE G6D, 112, 76, 145, 93, 90, 60
MOVE G6B, 100, 40, 80, ,,
MOVE G6C, 100, 40, 80, ,,
WAIT
RETURN

MOVE G6A, 86, 83, 135, 97, 114, 60
MOVE G6D, 113, 78, 145, 93, 93, 60
MOVE G6B, 90, 40, 80, ,,
MOVE G6C, 100, 40, 80, ,,
WAIT
RETURN

MOVE G6A, 90, 107, 105, 105, 114, 60
MOVE G6D, 113, 76, 145, 93, 90, 60
MOVE G6B, 90, 40, 80, ,,
MOVE G6C, 100, 40, 80, ,,
    
```

